

IT'S NOT U IT'S ME // THE POWER PLANT
JULY 30 2016

U

THE POWER PLANT

© Harbourfront centre

JULY 30
2PM - 3AM

STUDIO93H

WeSaie
BY REBÉE

ASSEMBLY

L.I.P.

deep gold

boop!

SUSPECT STUDIO

Thank You Kindly

It's Not U It's Me is thrilled to announce a world class summer party series with our partners at **The Power Plant Contemporary Art Gallery**.

Drawing inspiration from similar events at cultural institutions such as MOMA PS1, Vooruit and the ICA, The Power Plant will transform into a space celebrating the diverse cultures and DIY community spirit of underground dance music with internationally renowned DJs, AV performance art, sculptural installations, and dance floors you can lose yourself in. Highlights include Detroit pioneers **Claude Young, DJ Stingray, Rick Wilhite**, the **Interdimensional Transmissions/No Way Back** crew, Dutch disco heads **Antal & San Proper**, Discwoman acid priestess **Volvox**, and Chicago industrialist/L.I.E.S. associate **Beau Wanzer**, to name a few.

Come dance with us on **July 9, July 30 and August 20**, while the sun sets over the waterfront terrace, then head inside and align your body and mind in the sensory overload of our corridors and 3 storey **Harbourfront Centre Theatre**. Break up with the mundane and rekindle the soul. This is the undiluted dancefloor sublime, straight from the source, where your sweat equity pays spiritual dividends.

It's Not U, It's Me.
Are U Committed?

Tickets are on sale at itsnotuits.me/pp16.
Check out the video trailer for lineups and more info.

It's Not U, It's Me is a collective of Toronto party enthusiasts (including Assembly, Deep Gold, Format, Groove, Boop, and Work In Progress, among others) dedicated to furthering dialogues on what, where, and how underground dance music can be.
www.itsnotuits.me

The Power Plant Contemporary Art Gallery is Canada's leading non-collecting, public art gallery dedicated exclusively to contemporary visual art from Canada and the world. It is a vital forum for the advanced artistic culture of our time that offers an exceptional facility and professional support to a diverse group of living artists while engaging equally diverse audiences in their work.
www.thepowerplant.org

Content

01_Curatorial Brief

02_Artist Profiles

Alvin Luong

Daniel Griffin Hunt

Suspect Studio

03_Curatorial Team

Studio 93H

L.I.P.

Rebaie by Rebée

Suspect Studio

Thank You Kindly

It's Not U It's Me

Interdimensional Transmissions

04_Past Events



Curatorial Brief

It's Not U It's Me has mobilized a diverse curatorial team to reconceptualize what a party could be.

For the second installment of It's Not U It's Me at The Power Plant, L.I.P., Suspect Studio, and the artists Daniel Griffin Hunt and Alvin Luong, have devised ART PARTS.

ART PARTS refers to a three-part statement concerned with the constituent parts of art. That is the involvement of materials, language, and movement.

From the imaginative properties of For When You Need A Sign to the concrete realities of Keystoning, ART PARTS investigates the space between associative thinking,

stimulation, and seeing with sculpture, performance and video.

Therein, randomization, in the form of a phrase generator, may gesture towards memories and poetry inasmuch as a Dance Dance Revolution installation might remind us of a time past that is slowly returning. While, in a stroll towards the outdoors, we might be reminded that concrete structures, in all their brutality, are the children of an idea, taken from their home to be re-shaped by the viewer.

—The curatorial team,

It's Not U It's Me, Studio 93H, L.I.P., Suspect Studio, Rebaie by Rebée, Thank You Kindly.



Artist Profiles



Alvin Luong

I can't stand the hangover so let's just play DDR



Alvin Luong, I can't stand the hangover so let's just play DDR

Concept

I can't stand the hangover so let's just play DDR, is a video projection that reconciles the recent comeback of the aesthetics and consumer culture of the '90s with the '90s political and economic legacy.

Artist Profile

Alvin Luong is an artist from Toronto interested in how documentations and instructions are created and how they can be interpreted.

Web

alvinluong.com

Daniel Griffin Hunt

Keystoning (A Foundation Laid) and Buds



Daniel Griffin Hunt, Keystoning (A Foundation Laid)

Concept

Keystoning (A Foundation Laid) is two sets of foundation piers placed together in a circle and held by their own weight and a ratchet strap. **Buds (my little friends)** is a series of concrete blocks that move together depending on environmental terrain and interactions with viewers.

Artist Profile

Daniel Griffin Hunt's practice deals with the act of subversion, often recontextualizing a specific visual lexicon based on the material intelligence of an object.

Web

danielgriffinhunt.com

Suspect Studio

For When you Need A Sign

AGENT ECONOMICS

Sophia Katz and Colin Rosati

Concept

For When You Need A Sign is a phrase generator; a digital manifestation of the patterns humans inherently seek out in everyday life. Watching the generator cycle through new phrases, it almost seems as though it is learning and making more thematic sense.

Artist Profile

Suspect Studio is Sophia Katz and Colin Rosati. Katz is a writer, musician, and media artist. Rosati's work explores the absurdity of transcoding virtuality and physicality.

Web

colinrosati.com
sophia-katz.com

Philip Skoczkowski

Sonic City



Philip Skoczkowski, Sonic City

Concept

Sonic City is a documentary exploring the relationships between urban development and music culture. With places and spaces at the core of the project, Sonic City aims to shed light onto music production, consumption, and its dissemination across Toronto and beyond.

Artist Profile

Philip Skoczkowski is a multidisciplinary researcher/practitioner whose work revolves around contemporary citizen engagement, culture and development.

Web

skoczkowski.com

Amber Gillen



Concept

Using specific lighting color schemes, Amber Gillen ignites movement of specific body chakras to push forward the impetus to dance, and to help the audience feel free and open.

Artist Profile

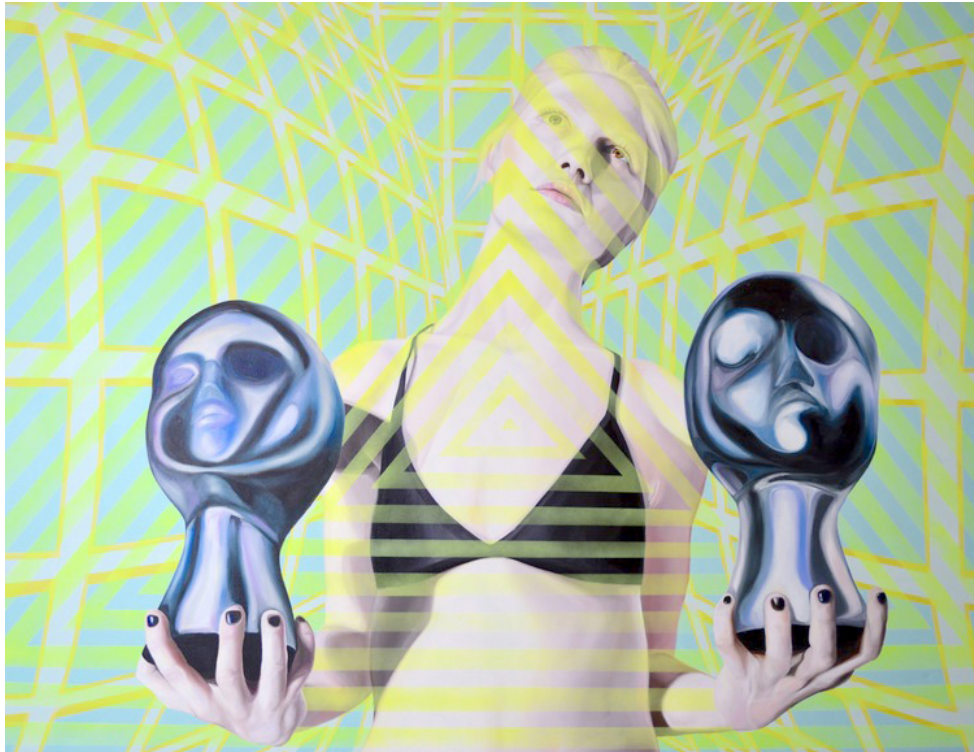
Amber Gillen works with temporary spatial installments integral to deeply themed musical events. Gillen's transformations transport patrons into different atmospheres.

Web

interdimensionaltransmissions.com/gallery

Michelle Tanguay

Uncanny Valley



Uncanny Valley, Michelle Tanguay

Concept

The image came to Michelle Tanguay in a dream, the title explains the meaning. The painting is made of oil and spray paint on canvas.

Artist Profile

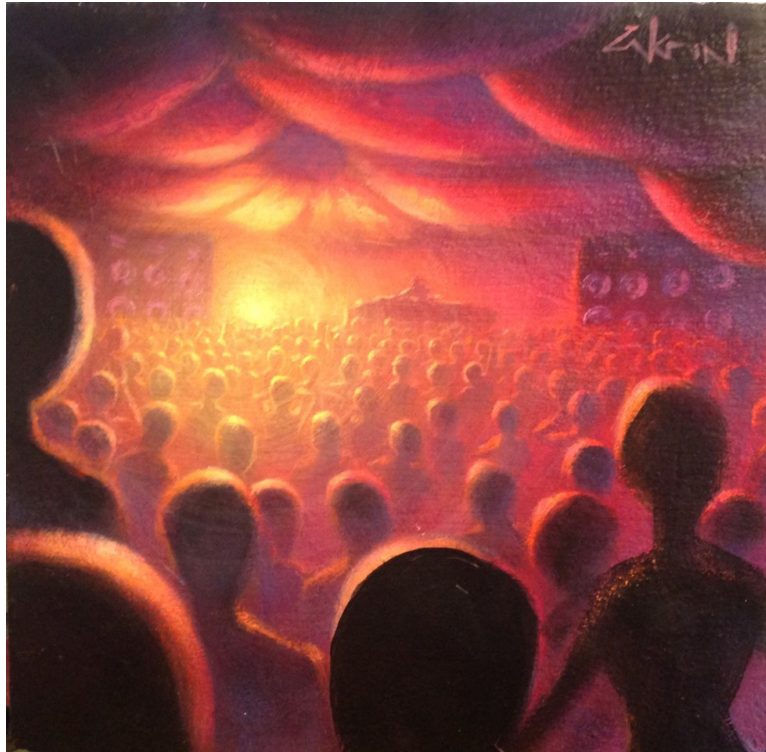
Michelle Tanguay is a Detroit based artist who specializes in photo-realistic oil painting.

Web

michelletanguay.com

Ron Zakrin

Partyscapes



Ron Zakrin, Partyscapes

Concept

Partyscapes is meant to be a snapshot of Detroit's most legendary underground parties, including those brought forth by the IT family, in simplified form. Painted in acrylic on wood panel, the paintings aim to record a moment in time based on the artist's experience.

Artist Profile

Ron Zakrin has been a creative force in Detroit since the nineties. He emerged in the underground electronic music scene with artworks that counterparted the Detroit sound.

Web

innerstategallery.com/artists/ron-zakrin/

NAI SAMMON

Groping in the Blackness of Space



NAI SAMMON, Groping in the Blackness of Space

Concept

Groping in the Blackness of Space is an amalgam of the low trash 70's bowling alley walls, metallic-shimmering schizoid geometry, teeth-chattering migraines enveloped in baroque elegance and shuddering synaptic spasms made in aerosol fumes and glass.

Artist Profile

Nai Sammon is a Detroit based visual and musical artist, and founder of the legendary punk group **The Piranhas**. He combines the inner world and sacred disciplines of **Magick** and the never ending expanse of the cosmos.

Web

facebook.com/nai.sammon



Curatorial Team

Studio 93H // Michael Seater + Miles Gertler

L.I.P. // Nick Yim

Rebaie by Rebée // Cam Lee

Suspect Studio // Sophia Katz

Thank You Kindly // Ariella Starkman

It's Not U It's Me // Brian Wong

Interdimensional Transmissions // Amber & Brendan M Gillen



Past Events





Sanctuary
It's Not U It's Me / Long Winter
May 20, 2016
Sts Cyril & Methody Church
237 Sackville St



Split Personalities
It's Not U It's Me
January 15, 2016
Bambi's / 76A Geary



Shoppers Dance Mart
It's Not U It's Me / Long Winter
January 30, 2016
Galleria Mall

IT'S NOT U IT'S ME \ THE POWER PLANT
JULY 30 2016

© Harpourt Centre

THE POWER PLANT

JULY 30
3PM - 5PM

ASSEMBLY

BYEBEE

STUDIO 3H

Kindly Thank You

SUSPECT STUDIO

pool!

blog qsb

ARTS GUIDE